



# TropeTrainer™

Software

## V5 Quick Start Guide

The serial number and activation code are emailed to you.

Please read this instruction sheet carefully. It contains many useful notes regarding the product's features. Be sure to read any brightly colored sheets included in the package. They cover special details of your product and last-minute changes.

For more complete instructions see:

[http://www.kinnor.com/TT5\\_Instructions.pdf](http://www.kinnor.com/TT5_Instructions.pdf) (Link is case sensitive)

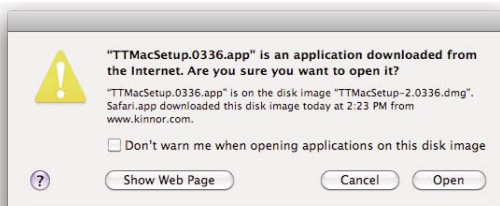
### Mac Installation (for PC, see next page) Requires OS X version 10.4 or greater

☞ If there is more than one user account on your computer, be sure to install the software on an Administrator account. It should then work properly for all other users.

To check if you are an administrator, click the Apple icon at the top-left of the menu bar, and select *System Preferences...* The *System Preferences* window opens. Click the *Accounts* icon in the *System Preferences* window. The *Accounts* window opens. The first item in the left-hand column of the *Accounts* window will say *My Account*. If you are an admin, the word *Admin* appears under your name. If you are not an admin, the word *Standard* appears. If you are a standard user, get the person who manages your computer to log in as an admin to continue with these instructions.

☞ Click on the download link in your activation information email, or use Safari to open: [www.kinnor.com/download-ttrel.html](http://www.kinnor.com/download-ttrel.html) (enter this link in small letters, not capitals) The TropeTrainer software download page opens. On that page, click on the link: Mac: Download TropeTrainer™ software version 5.0.??? After the download completes, the Download folder icon will bounce. Open the Download folder and doubleclick TTMacSetup.????. A window will open with the Setup file:

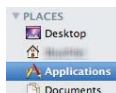
☞ Doubleclick on the TTMacSetup icon. A warning window similar to this will be displayed:



Click *Open* to start the installer. Follow the on-screen setup instructions.

☞ To start TropeTrainer software, open a Finder window.

Click the *Applications* folder in the *Places* list in




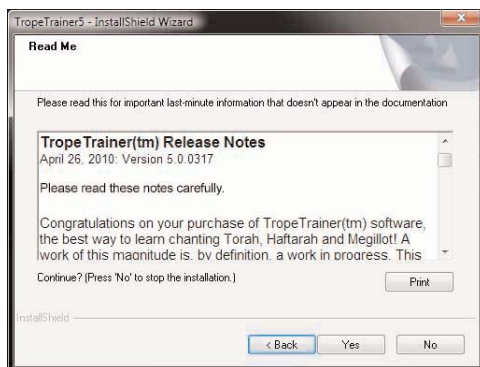
the left column of the Finder window.


In the *Applications* folder, find and double-click the *TropeTrainer* folder. Double-click the *TropeTrainer.app* file. (Your system might not show the *.app* extension.)

☞ To add *TropeTrainer.app* to your Mac's dock, click to select it, and press **⌘T**.

## PC Installation (for Mac, see previous page) Requires XP, Vista or Win 7

- ☞ If there is more than one user account on your computer, be sure to install the software on an Administrator account.
- ☞ Click on the download link in your activation information email, or use your web browser to open: [www.kinnor.com/download-ttrel.html](http://www.kinnor.com/download-ttrel.html) (enter this link in small letters, not capitals) The TropeTrainer software download page opens. On that page, click on the link:  
PC: Download TropeTrainer™ software version 5.0.??? If you are given the option to *Run* the installer from its web location, select that option, otherwise be sure to save the installer to a folder you can find later -- such as your desktop. The installer will have a name like *TropeTrainerWinSetup.???*
- ☞ After the download is complete, doubleclick the installer's icon from the folder in which you saved it. You may see one or two warning windows. The installer is displayed. 

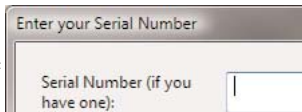


- ☞ Follow the on-screen setup instructions.
- ☞ To start TropeTrainer software, click the *Start* button (the Pearl ). Move the cursor over *Programs* (at the bottom of the list) and select *TropeTrainer(tm) software*.
- ☞ To add a *TropeTrainer* shortcut to your desktop, drag the TropeTrainer icon from the Start menu list to the desktop.

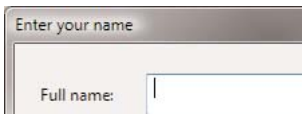
## Activating TropeTrainer™ software

The first time TropeTrainer™ software is run, you will be asked for your serial number and other activation information:

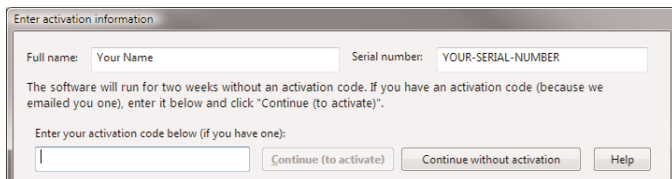
☞ Enter the serial number from the sticker on the panel to the left. Be sure to enter all dashes in the serial number.



☞ Enter at least your first and last name in the next window that appears. If you received an activation code from us (on a sticker or in an email) be sure to enter your name *exactly* the way it appears in the activation information. Don't add or remove punctuations or initials.

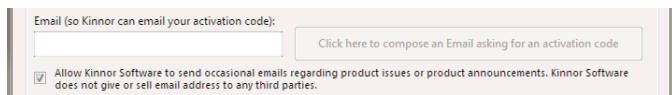


After you have entered your serial number and full name, you'll be asked to activate the software. The software will run for two weeks without activation, giving you time to get your code.



☞ If you have an activation code, check that your name and serial number match the activation information, then enter your activation code, then click *Continue (to activate)*.

☞ If you do not have an activation code, use the bottom part of the *Activation information* window to create an email asking for the code.



☞ To request an activation code, enter your email address in the *Email* field shown, and click *Click here to compose an Email asking for an activation code*. Your normal email software should open with a pre-filled email. Just click *Send*. If your normal email system does not open up, just send an email to [activation@kinnor.com](mailto:activation@kinnor.com) including the full name you entered previously and your serial number. Please allow up to 72 hours (longer just before a Jewish or U.S. Post Office holiday) for us to respond with your activation information.

After sending your email, click *Continue without activation* to begin using the software. Until you activate the software, the *Activation information* window will appear each time you start using the software. Click *Continue without activation* to use the software.

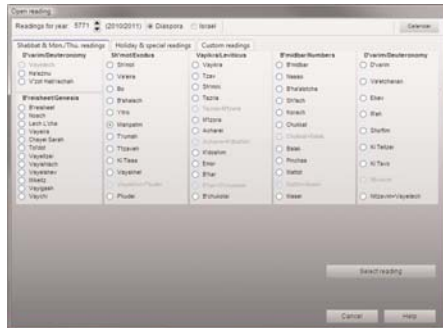
Save the activation information in a safe place—it is the key to your software copy.

## First-time startup: Single Parsha edition

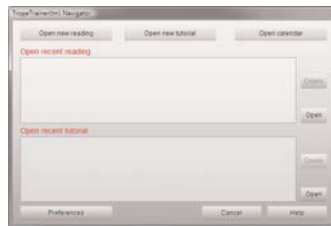
*(Skip this section if you are using a Standard or Deluxe edition of TropeTrainer software.)*

The *Single Parsha* edition of TropeTrainer software lets you select your one parsha (weekly or holiday Torah reading) when you start the software for the first time, and stores that selection for future times that you open the software.

The first time the software starts, and after asking for your serial number, full name, and optionally your activation information, the software will ask which reading you select for your single parsha:



To select your reading, click the radio button to the right of the *Single reading* you want to select. If your reading is a holiday, click the *Holiday & special readings* tab and select your reading from that list. Check with your rabbi, cantor or bar mitzvah teacher to ensure you are selecting the proper reading for your reading date, or if you have any questions regarding reading options. After you select your reading, click the *Select reading* button. You will be asked to confirm your selection. A blank Navigator window will open:




Click the *Open new reading* button. The *Open reading* window is displayed, with your single parsha selected. To open the Torah reading, click *Open Torah Portion* button. To select between Shabbat and Weekday readings, click the option you want in the Torah Options list on the bottom-left of the window. To open the Haftarah reading, click the *Open Haftarah* button. Some weeks have options for the Haftarah. Select the desired option from Haftarah Options.

**If you discover you have selected the wrong reading, please email [support@kinnor.com](mailto:support@kinnor.com) with your name, serial number and the name of the correct reading. We will send instructions telling you how to select a different reading.**

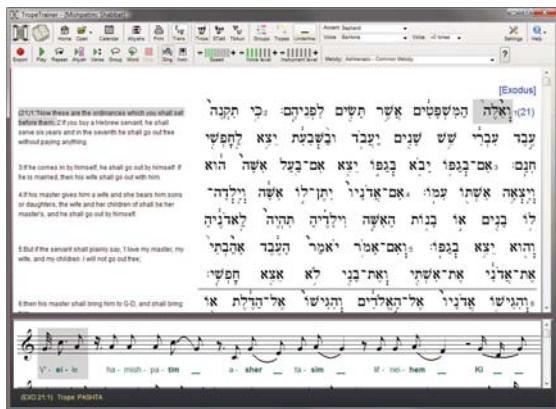
## Using TropeTrainer™ software—the basics

Complete instructions for using TropeTrainer software can be seen by clicking the *Help* button on any of the major windows of the software. Here are the basics:


When TropeTrainer software starts, its *Navigator* window opens. You can choose from the last eight readings or tutorials you have recently opened.


To open a reading or tutorial from the *Navigator* list, double-click the list item for the reading, or single-click the line and click the *Open* button to the right of the list. You can get back to the *Navigator* window at any time by clicking the *Home* button  on the top-left of the toolbar on the software's main window.

After you select a reading to open, the main window is displayed:



The main TropeTrainer software window is where you will do most of your work.


To open a reading, click the *Open* button  on the top menu bar of the main window. Click *Open reading* from the popup menu that is displayed. If your synagogue uses a Triennial reading cycle, click the *Triennial* button at the top of the *Open reading form*. If you want to create a custom reading, click the *Custom reading* tab and click *Help* for more instructions.


To play the reading, click the green *Play* button , which will play from the grey cursor highlighting a word until the end of the reading.

To stop the playing, click the red *Stop* button .

To adjust the speed or voice volume level, click the “+” or “-” buttons on either side of the *Speed* or *Voice level* controls  or click on the grey or green bars themselves to jump to a setting.


To print a reading or the musical score for the reading, click the *Print* button. 

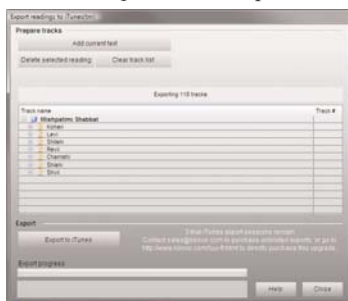
To open a tutorial, click the *Open* button  on the top menu bar of the main window. Click *Open tutorial* from the popup menu that is displayed. Select the type of tutorial you want to study, e.g. Torah or Haftarah, and then from the list displayed in the bottom box of the tutorial selector choose the specific tutorial you will study.

For more detailed instructions regarding use of the *Main* window, click the *Help* button at the top-right of the main window and select *Using TropeTrainer(tm) software* from the pop-up menu that appears. 

## Exporting readings to iTunes®

iTunes exports are for your personal use. The standard license agreement (see below) for this software permits you to export readings to iTunes for your use and the use of your immediate family. Specifically, you are not licensed to export readings to iTunes for use by your students. Contact [sales@kinnor.com](mailto:sales@kinnor.com) to license commercial exports.

Each copy of the software comes with three trial export sessions. To export a reading to iTunes, open the reading you want. Make sure only the verses you want exported are displayed. Set the desired melody, voice, pitch and speed. Click the red *iTunes export* button . The *iTunes export* window opens.



☞ To export the selected tracks to iTunes, click the *Add current text* button. You can add more readings (for example, the blessings before and after a reading) to the export by going back to the main window and opening the desired reading, then clicking the red *iTunes export* button again and clicking *Add current text*.

☞ When you've added all the readings you want for this export session, start iTunes and make sure it is not waiting for user input (for example, to accept a new license agreement), then click *Export to iTunes*.

For more instructions regarding iTunes exports, click the *Help* button at the bottom of the *iTunes export* window.



## Learning tips

Start with Tutorials. Open the tutorial for the type of reading (e.g. Torah/Haftarah) you want to learn. Start with the Tips. Read each lesson panel (on the left side of the main window) carefully. Click the *Next* button on the bottom-left of the main window to select the next lesson.


Do the trope exercises until you are fluent with them. Take your time and be sure that you learn to be comfortable to almost automatically sing all trope combinations whenever you see their symbols. Expect to spend up to an hour a day every day (except Shabbat and Jewish Holidays) practicing the exercises for each trope group to learn them well. (Depending on your musical skills, you may find that you learn faster or slower than this.)


Click the *Next exercise* button on the bottom-right of the main window to move to the next exercise within a lesson.

After you have completed the *Etmachta* exercises, complete the lessons teaching you how to apply to Hebrew words the trope melodies you have learned.

Use what you have learned to begin chanting your selected reading. Open your selected reading. Click the *Groups* button  to color-highlight the three most common trope groups. All the *Etnachta* phrases in your reading will be colored with a dark pink background. Go through your reading, reading each of the pink phrases with their trope melody. You can click on the first word of the trope group and click the *Group* play button  which will chant the words until the end of the current trope group.

If you spend a good week on each of the three most common trope groups--*Etnachta*, *Sof Pasuk* and *Zakef Katon*, you'll find that after three weeks you'll be able to chant around 80 to 90% of your reading. Keep going through the lessons and with patience and consistent work you'll be able to chant your entire reading several weeks after that.

If you are learning a Torah portion or Megillat Esther, you will have to learn to chant from a scroll that has no vowels or tropes. With a reading displayed, click the *Tikkun* button  to display two columns--the left showing the hand-written *STaM* text (*STaM* = *Sefer Torah*/*Tefillin*/*Mezuzot*) without vowels or tropes, the right with vowels and tropes. Learn the left column, referring to the right column as necessary.

After you are comfortable with the *Tikkun* display, click the *STaM* button  to display only the *STaM* text (without vowels and tropes). Practice until you can chant from this text without any hesitation. Be sure to learn the melodies for the verses, not just their position on the page. Although newer Torahs mostly follow the format of text seen in *TropeTrainer* software, but there is no guarantee that the Torah you will read from has its text in the exact layout of words.

Be sure to check out the tutorials *Combining phrases* which teaches how to connect various trope groups, and *Common Trope combinations* which shows all the melodies in one place.

Further help regarding all of the topics discussed above can be found by clicking the *Help* button on the top-right of the main *TropeTrainer* window, and on the bottom of all other windows. Complete instructions for using *TropeTrainer* software can be downloaded from:

[www.kinnor.com/TT5\\_Instructions.pdf](http://www.kinnor.com/TT5_Instructions.pdf) (this link is case sensitive)

*TropeTrainer™ software QuickStart Guide* (c) 2011, Kinnor Software, Inc. All rights reserved. [1-15-11]

## Highlights of the TropeTrainer™ License Agreement

Please read this carefully:

The license agreement (shown below in full) is an agreement between you (the user) and Kinnor Software, Inc. that grants you the rights to install and use the *TropeTrainer* software. In exchange for those rights, you agree to not make illegal copies of the *TropeTrainer* software for others. In addition you agree to arrange that each copy of *TropeTrainer* software you license is installed on a maximum of two computers under your direct control and directly associated with your household, and that the Software will only be used on one computer at a time. For example, if you use the software on your notebook computer, a family member or friend may not at the same time use the software on your desktop computer unless you license an additional copy.

*TropeTrainer* software is not licensed for use in lending situations. In particular, please do not make illegal copies of the installation CD-ROM for the *Trope Trainer* software to give to others. Making illegal copies of the installation CD-ROM for the *TropeTrainer* software is a violation of copyright and Torah law—it is a form of theft.

Some versions of *TropeTrainer* software might have the capability of downloading sound or video to iTunes®. iTunes downloads may not be transferred to anyone outside of your immediate family, and may not be sold to anyone.

Please read the full License Agreement below for additional rights and restrictions.

## **TROPETRAINER(TM) License Agreement and Limited Warranty**

This license agreement and limited warranty is a legal agreement ("License Agreement") between you (either as an individual or a single entity) and Kinnor Software, Inc. ("Kinnor") for the software product ("Software") identified above, including any software, media, and accompanying on-line or printed documentation. BY INSTALLING, COPYING, OR OTHERWISE USING THE SOFTWARE, YOU AGREE TO BE BOUND BY ALL OF THE TERMS AND CONDITIONS OF THE LICENSE AGREEMENT. If you are the original purchaser of the Software and you do not agree with the terms and conditions of the License Agreement, promptly return the unused Software to the place from which you obtained it for a full refund.

Upon your acceptance of the terms and conditions of the License Agreement, Kinnor grants you the right to use the Software in the manner provided below. This Software is owned by Kinnor or its suppliers and is protected by copyright law and international copyright treaty. Therefore, you must treat this Software like any other copyrighted material (e.g., a book), except that you may either make one copy of the Software solely for backup or archival purposes or transfer the Software to a single hard disk for backup or archival purposes provided you also keep the original. You may transfer the Software and documentation on a permanent basis provided you retain no copies and the recipient agrees to the terms of the License Agreement and you have not yet installed the software on any computer. You may not transfer your license to another party once you have installed the software on a computer. You may not transfer your license to another party by selling or transferring ownership of the computer on which the Software is installed. The Software must first be uninstalled from any computer on which the Software is installed before transferring ownership of the computer. Your software license is terminated upon sale or transfer of the computer on which the Software is installed.

Except as provided in the License Agreement, you may not transfer, rent, lease, lend, copy, modify, translate, sublicense, time-share or electronically transmit or receive the Software, media or documentation. You acknowledge that the Software in source code form remains a confidential trade secret of Kinnor and/or its suppliers and therefore you agree not to modify the Software or attempt to reverse engineer, decompile, or disassemble the Software, except and only to the extent that such activity is expressly permitted by applicable law notwithstanding this limitation.

If you have purchased an upgrade version of the Software, it constitutes a single product with the Kinnor software that you upgraded. You may use or transfer the upgrade version of the Software only in accordance with this License Agreement. This Software is subject to U.S. Commerce Department export restrictions, and is intended for use in the country into which Kinnor sold it (or in the EEC, if sold into the EEC).

**ADDITIONAL LICENSE TERMS FOR TROPETRAINER(TM) SOFTWARE** Kinnor grants to you as an individual, a personal, nonexclusive license to install and use the Software for the sole purposes of displaying, printing, and listening to Prayers, Biblical readings and related texts. Each copy of the Software is identified by a unique serial number. You may install a copy of the Software for your personal use on a maximum of two computers. At no time may the Software be used on both computers at the same time. If you are an entity, Kinnor grants you the right to designate one individual at time within your organization ("Named User") to have the right to use the Software in the manner provided above. At no time may more than one individual use the same copy of the Software at one time by any means. If more than one individual will be using the same copy (as identified by its serial number) at the same time on more than one computer, additional copies of the software must be purchased for each simultaneous additional user of the Software.

Some versions of TropeTrainer(TM) software might provide the ability to download chanted Prayers and Biblical readings to iTunes(r) software. For those versions, you may download chanted readings to iTunes software **ONLY FOR PERSONAL AND FAMILY USE. IN NO EVENT MAY YOU SELL DOWNLOADED READINGS TO ANYONE, NOR MAY YOU TRANSFER DOWNLOADED READINGS TO OTHERS OUTSIDE OF YOUR IMMEDIATE FAMILY FOR ANY PURPOSE, INCLUDING COMMERCIAL OR EDUCATIONAL.**

**LIMITED WARRANTY** Kinnor warrants that the Software, as updated and when properly used, will perform substantially in accordance with the accompanying documentation, and the Software media (if any) or downloads will be free from defects in materials and workmanship, for a period of ninety (90) days from the date of receipt. Any implied warranties on the Software are limited to ninety (90) days. Some states/jurisdictions do not allow limitations on duration of an implied warranty, so the above limitation may not apply to you. Kinnor's and its suppliers' entire liability and your exclusive remedy shall be, at Kinnor's option, either (a) return of the price paid, or (b) repair or replacement of the Software that does not meet Kinnor's Limited Warranty and which is returned to Kinnor with a copy of your receipt. DO NOT



RETURN ANY PRODUCT UNTIL YOU HAVE CALLED KINNOR AND OBTAINED A RETURN AUTHORIZATION NUMBER. This Limited Warranty is void if failure of the Software has resulted from accident, abuse, or misapplication. Any replacement Software will be warranted for the remainder of the original warranty period or thirty (30) days, whichever is longer. Outside the United States, neither these remedies nor any product support services offered by Kinnor are available without proof of purchase from an authorized non-U.S. source.

TO THE MAXIMUM EXTENT PERMITTED BY APPLICABLE LAW, KINNOR AND ITS SUPPLIERS DISCLAIM ALL OTHER WARRANTIES AND CONDITIONS, EITHER EXPRESS OR IMPLIED, INCLUDING, BUT NOT LIMITED TO, IMPLIED WARRANTIES OF MERCHANTABILITY, FITNESS FOR A PARTICULAR PURPOSE, TITLE, AND NON-INFRINGEMENT, WITH REGARD TO THE SOFTWARE, AND THE PROVISION OF OR FAILURE TO PROVIDE SUPPORT SERVICES. THIS LIMITED WARRANTY GIVES YOU SPECIFIC LEGAL RIGHTS. YOU MAY HAVE OTHERS, WHICH VARY FROM STATE/JURISDICTION TO STATE/JURISDICTION. LIMITATION OF LIABILITY TO THE MAXIMUM EXTENT PERMITTED BY APPLICABLE LAW, IN NO EVENT SHALL KINNOR OR ITS SUPPLIERS BE LIABLE FOR ANY SPECIAL, INCIDENTAL, INDIRECT, OR CONSEQUENTIAL DAMAGES WHATSOEVER (INCLUDING, WITHOUT LIMITATION, DAMAGES FOR LOSS OF BUSINESS PROFITS, BUSINESS INTERRUPTION, LOSS OF BUSINESS INFORMATION, OR ANY OTHER PECUNIARY LOSS) ARISING OUT OF THE USE OF OR INABILITY TO USE THE SOFTWARE PRODUCT OR THE PROVISION OF OR FAILURE TO PROVIDE SUPPORT SERVICES, EVEN IF KINNOR HAS BEEN ADVISED OF THE POSSIBILITY OF SUCH DAMAGES. IN ANY CASE, KINNOR'S ENTIRE LIABILITY UNDER ANY PROVISION OF THIS LICENSE AGREEMENT SHALL BE LIMITED TO THE GREATER OF THE AMOUNT ACTUALLY PAID BY YOU FOR THE SOFTWARE PRODUCT OR U.S. \$25. BECAUSE SOME STATES AND JURISDICTIONS DO NOT ALLOW THE EXCLUSION OR LIMITATION OF LIABILITY, THE ABOVE LIMITATION MAY NOT APPLY TO YOU.

**U.S. GOVERNMENT RESTRICTED RIGHTS** The Software and documentation are provided with RESTRICTED RIGHTS. Use, duplication, or disclosure by the Government is subject to restrictions as set forth in subparagraphs (c)(1)(ii) of the Rights in Technical Data and Computer Software clause at DFARS 252.227-7013 or subparagraphs (c)(1) and (2) of the Commercial Computer Software-Restricted Rights at 48 CFR 52.227-19, as applicable. Manufacturer is Kinnor Software, Inc. 3655 Seaside Dr. Suite 220, Key West, FL 33040 US.

**GENERAL PROVISIONS** This License Agreement may only be modified in writing signed by you and an authorized officer of Kinnor. All terms of any purchase order or other ordering document shall be superseded by this License Agreement. Kinnor shall be not be liable for any default or delay in the performance of its obligations under this End User License to the extent its performance is delayed or prevented due to causes beyond its reasonable control, such as acts of God, natural disasters, terrorist acts, war or other hostilities, labor disputes, civil disturbances, the actions or omissions of third parties, electrical or communication system failures, or governmental action. If any provision of this License Agreement is found void or unenforceable, the remainder will remain valid and enforceable according to its terms. If any remedy provided is determined to have failed for its essential purpose, all limitations of liability and exclusions of damages set forth in the Limited Warranty shall remain in effect. This License Agreement shall be construed, interpreted and governed by the laws of the State of Florida, U.S.A. This License Agreement gives you specific legal rights; you may have others which vary from state to state and from country to country. Kinnor reserves all rights not specifically granted in this License Agreement.

**Termination and Amendment** Your rights under this License Agreement may be terminated by Kinnor immediately and without notice if you fail to comply with any term or condition of this License Agreement. Upon such termination, you must immediately cease using the Software, and delete or destroy all complete and partial copies of the Software, including all backup copies, and Kinnor will be entitled to all remedies in accordance with applicable law. Any termination of this End User License shall not affect Kinnor's rights hereunder. Kinnor shall have the right to change or add to the terms of its License Agreements at any time, and to change, delete, discontinue, or impose conditions on any feature or aspect of the Software or Services (including but not limited to internet based services, pricing, technical support options, and other product-related policies) upon notice by any means Kinnor determines in its discretion to be reasonable, including sending you an email notification or posting information concerning any such change, addition, deletion, discontinuance or conditions in the Software or on any Kinnor sponsored web site, including but not limited to the web site <http://www.kinnor.com>.